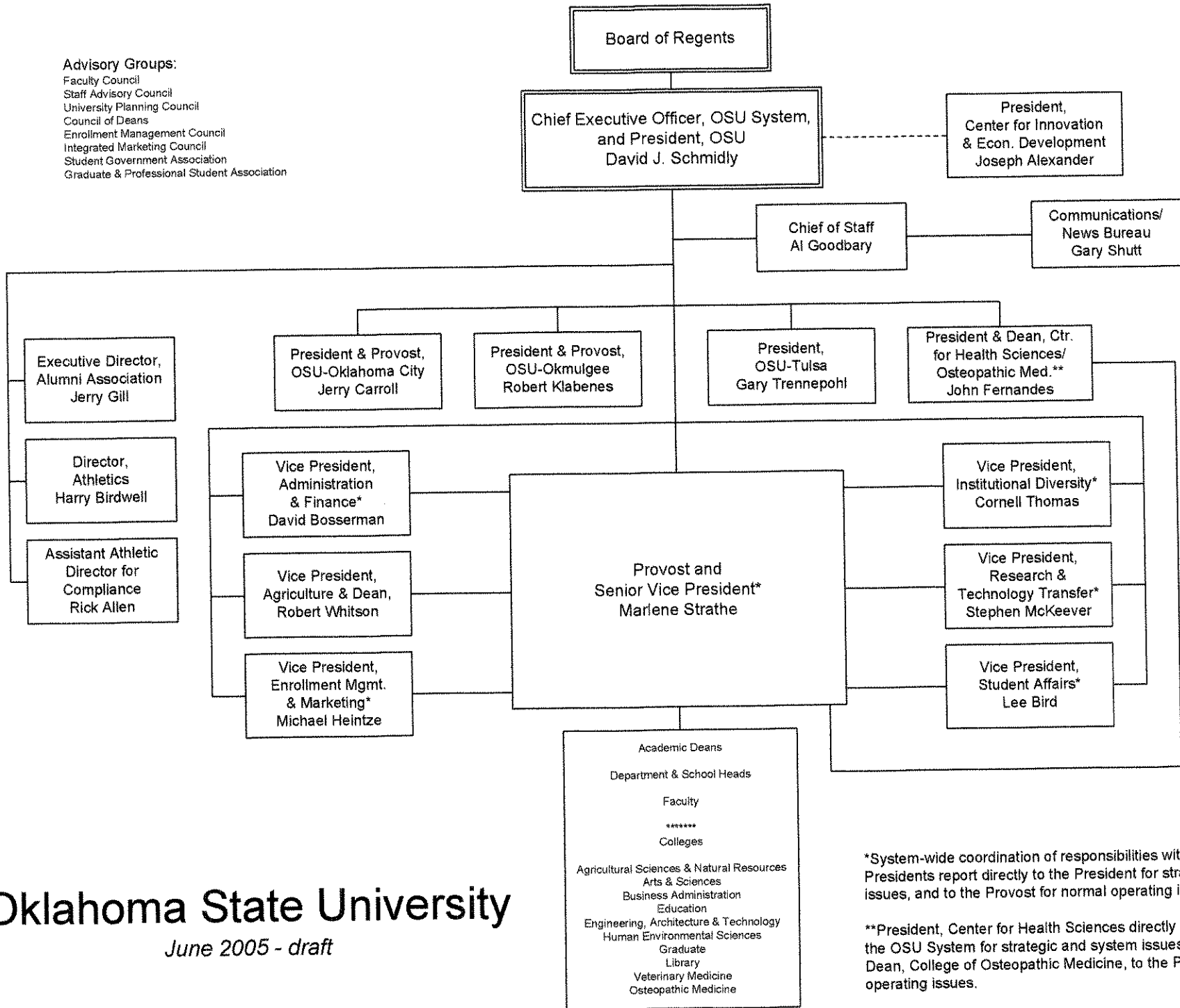


- Advisory Groups:**
 Faculty Council
 Staff Advisory Council
 University Planning Council
 Council of Deans
 Enrollment Management Council
 Integrated Marketing Council
 Student Government Association
 Graduate & Professional Student Association



Oklahoma State University

June 2005 - draft

*System-wide coordination of responsibilities within area. Vice Presidents report directly to the President for strategic and system issues, and to the Provost for normal operating issues.

**President, Center for Health Sciences directly to the President of the OSU System for strategic and system issues, and, as the Dean, College of Osteopathic Medicine, to the Provost for normal operating issues.